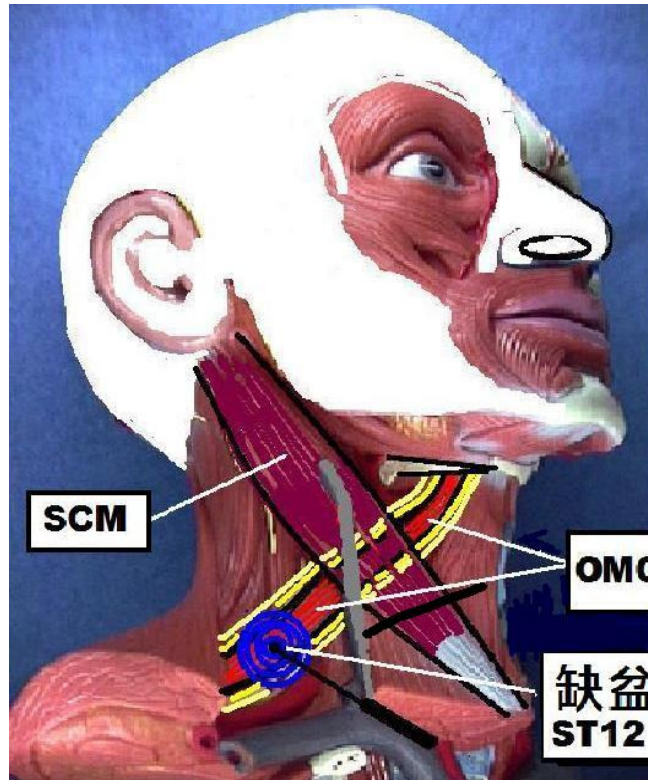


# INDICATIONS:



- BRACHIAL PLEXUS IRRITATION
- THROAT SWELLING
- TORTICOLLIS
- COMPRESSION OF INTERNAL JUGULAR VEIN LEADING TO MODIFICATIONS IN INTRACEREBRAL VENOUS HEMODYNAMIC
- SCM TENSION

- RELEASE OF SUPRASCAPULAR NERVE WITH NEEDLING OF POINT ST12 - QUE PEN
- SUPRASCAPULAR NERVE ENTRAPMENT LEADS TO SHOULDER DYSFUNCTION

**MAIN MUSCULO-SKELETAL INDICATION IS RELEASE OF MUSCLE TENSION / SPASM BETWEEN THE SHOULDER BLADE AND THE SPINE- RHOMBOID AREA.**

**NEEDLING TECHNIQUE:**

**DEPTH:**

**FROM 3 FEN TO 1 TSUN ACCORDINGLY TO PATIENT'S PHYSIQUE**

**DIRECTION:**

**OFTEN NEEDS TO BE ADJUSTED DURING INSERTION-WHEN POINTING THE NEEDLE IN OUTWARD DIRECTION SENSATION CAN EXTEND TO THE ARM, THEREFORE, MAY NEED TO BE ADJUSTED INWARDLY, SIMILARLY IF POINTED IN DOWNWARD DIRECTION MAY CREATE SENSATION TRAVELLING TO THE CHEST IN WHICH CASE NEEDLE HAS TO BE ADJUSTED AND TAKEN MORE UPWARDS UNTIL THERE IS DSTINCT SENSATION SPREADING TO THE BLADE AND RHOMBOID REGION.**